

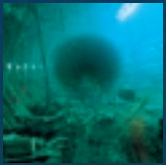
LEVEL SENSORS

ULTRASONIC LEVEL SENSOR

CAPACITIVE LEVEL SENSOR

CAPACITIVE LEVEL SWITCH

SUBMERSIBLE LEVEL SWITCH





ULTRASONIC LEVEL SENSOR/TRANSMITTER

Continuous non-contact level measurement of liquids, mash and paste materials in closed or open vessels and reservoirs.

FEATURES

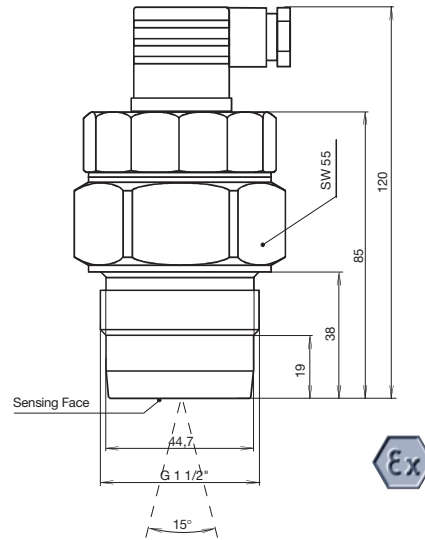
- 2-wire connection with 4...20mA analogue output.
- Distance measurement up to 5m.
- Compact and robust stainless steel housing.
- Simple connection by means of DIN 43650 sealed connector.
- Wide ambient temperature range up to -30°C...70°C.
- Optional terminal housing with integral digital display.
- Certified intrinsically safe version for use in Group II hazardous areas.



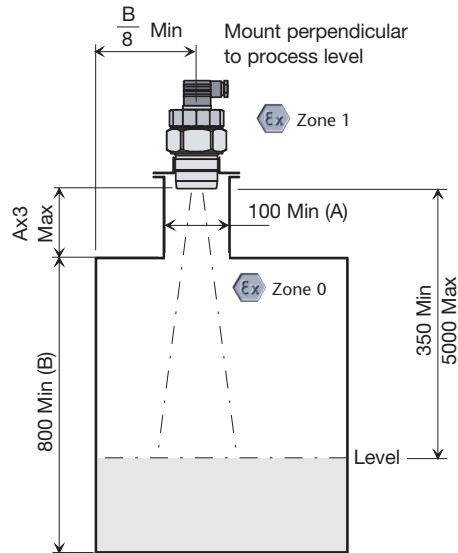
TECHNICAL details

Liquid Depth Measuring Adjustable Range:	0...0.8m up to 0...4.65m.
Range Adjustment:	Two internal 15 turn adjustment potentiometers for ZERO and SPAN.
Minimum Distance: (sensing face to liquid).	0.35m.
Maximum Distance: (sensing face to liquid).	5m.
Level Sampling Rate:	10Hz
Ambient Temperature Limits:	-30°C...70°C.
Humidity:	0...95% RH non-condensing.
Protection Classification:	Dust and waterproof to IP65.
Housing Material:	Stainless steel.
Nett Weight:	0.6kg.
Repetative Accuracy:	0.5%.
Temperature Stability:	0.04%K.
Sonic Beam Angle:	15° nominal.
Electrical Connection:	Plug and Socket connector (DIN 43650).

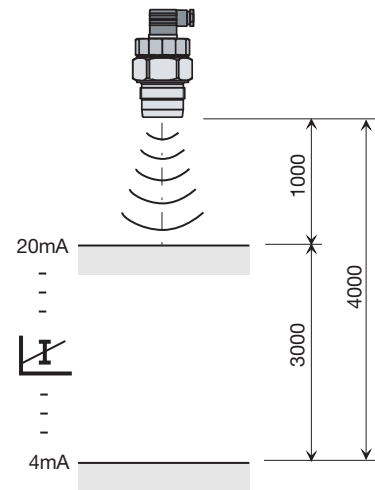
DIMENSIONS
in mm.



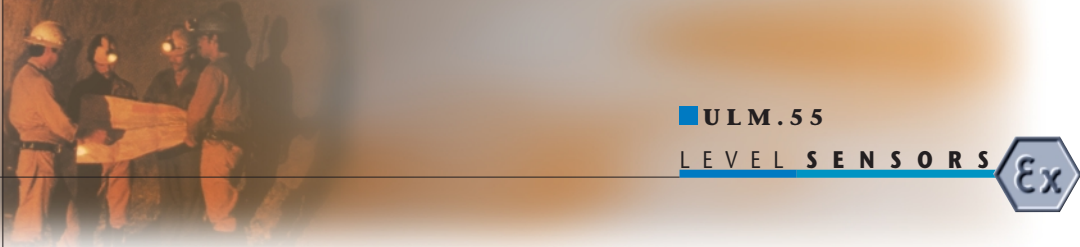
Mounting Parameters



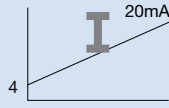
Standard Factory Calibration



- Calibrated for air at normal atmospheric pressure and at an ambient temperature of 25°C.
- The response of the sensor may vary dependent upon changes in operating conditions.



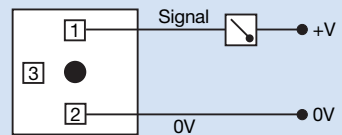
ELECTRICAL details

Output	4...20mA. 2 wire, line powered	
Maximum Load	600 ohms at 24V dc	
Supply Voltage	General Purpose Version: 12...30V dc Ex Version: 12...24V dc Max	
Maximum Current	27mA	

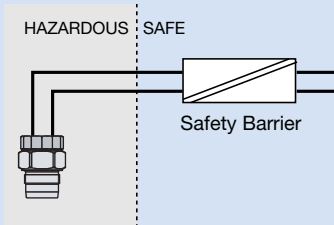
Connections:

Recommended Cable: 2 Core 0.75mm²
PVC Insulated
Max OD: 6.8mm

Connector (DIN 43650)

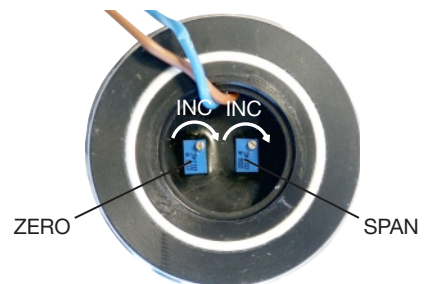


- The Ex version must be powered via a suitable zener safety barrier or galvanic isolator.



RANGE ADJUSTMENT

- Fit the sensor and remove the top cover.
- Connect a current meter into the 4...20mA loop.
- Set ZERO when the process level is at the minimum point.
- Set SPAN when the process level is at the maximum point.
- Re-assemble.





ORDER
REFERENCE

■ ULM.55 ULTRASONIC LEVEL SENSOR/TRANSMITTER.

Please specify additional information:

- General Purpose Application (.03)
- Group II Ex Application (.02)

CERTIFICATION
& APPROVAL



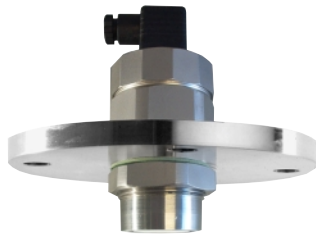
Group II Zone 0/1: II 1/2 G EEx ia IIB T5:

Must be powered with a suitable safety barrier



Designed to comply with the requirements of the EC directive: • ATEX directive 94/9/EEC
• EMC directive 89/336/EEC

ACCESSORIES



Flange mounting option to specific requirements.



Robust terminal housing option with hinged cover, integral programmable digital display and heavy duty connecting terminals.