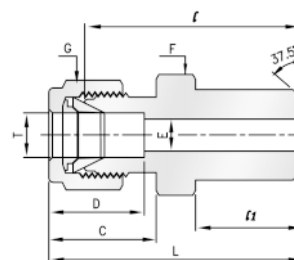


## Male Pipe Weld Connector



### Imperial Range:

Part No.	Tube O. D. T in	Male Pipe Size P	E Min	Width across flat		D	C	l	l <sub>1</sub>	L
				F in	G in					
PMWC-02-02	1/8	1/8	2.28	7/16	7/16	12.70	15.24	24.64	9.65	31.24
PMWC-03-02	3/16	1/8	3.04	7/16	1/2	13.71	16.00	24.63	9.65	31.24
PMWC-04-02	1/4	1/8	4.82	1/2	9/16	15.24	17.78	25.40	9.65	32.76
PMWC-04-04	1/4	1/4	4.82	9/16	9/16	15.24	17.78	30.48	14.22	37.84
PMWC-05-02	5/16	1/8	5.08	9/16	5/8	16.25	18.54	28.66	9.65	37.03
PMWC-05-04	5/16	1/4	6.35	9/16	5/8	16.25	18.54	31.24	14.22	38.60
PMWC-06-04	3/8	1/4	7.11	5/8	11/16	16.76	19.30	32.51	14.22	39.87
PMWC-06-06	3/8	3/8	7.11	11/16	11/16	16.76	19.30	32.51	11.05	39.87
PMWC-06-08	3/8	1/2	7.11	7/8	11/16	16.76	19.30	35.87	14.22	43.23
PMWC-08-06	1/2	3/8	10.41	13/16	7/8	22.86	21.84	33.27	19.05	43.43
PMWC-08-08	1/2	1/2	10.41	7/8	7/8	22.86	21.84	38.86	14.22	49.02
PMWC-08-12	1/2	3/4	10.41	1-1/16	7/8	22.86	21.84	40.38	19.05	50.54
PMWC-10-08	5/8	1/2	12.70	15/16	1	24.38	21.84	38.86	19.05	49.02
PMWC-12-12	3/4	3/4	15.74	1-7/16	1-1/8	24.38	21.84	40.38	19.05	50.54
PMWC-16-16	1	1	22.35	1-3/8	1/1-2	31.24	26.41	50.04	23.87	62.23

### Metric Range:

Part No.	Tube O. D. T mm	Male Pipe Size P	E Min	Width across flat		D	C	l	l <sub>1</sub>	L
				F mm	G mm					
PMWC-M03-02	3	1/8	2.4	12	12	12.9	15.3	23.10	9.7	29.70
PMWC-M04-02	4	1/8	2.4	12	12	13.7	16.1	24.10	9.7	30.70
PMWC-M06-02	6	1/8	4.8	14	14	15.3	17.7	25.40	9.7	32.80
PMWC-M06-04	6	1/4	4.8	14	14	15.3	17.7	30.20	14.2	37.60
PMWC-M08-02	8	1/8	5.1	15	16	16.2	18.6	26.70	9.7	34.20
PMWC-M08-04	8	1/4	6.4	15	16	16.2	18.6	31.20	14.2	38.70
PMWC-M08-08	8	1/2	6.4	22	16	16.2	18.6	37.30	19.0	44.80
PMWC-M10-04	10	1/4	7.1	18	19	17.2	19.5	33.30	14.2	40.90
PMWC-M10-06	10	3/8	7.9	18	19	17.2	19.5	32.50	14.2	40.10
PMWC-M10-08	10	1/2	7.9	22	19	17.2	19.5	38.10	19.0	45.70
PMWC-M12-04	12	1/4	7.1	22	22	22.8	22.0	33.30	14.2	43.40
PMWC-M12-06	12	3/8	9.5	22	22	22.8	22.0	33.30	14.2	43.40
PMWC-M12-08	12	1/2	9.5	24	22	22.8	22.0	38.10	19.0	48.20
PMWC-M15-08	15	1/2	11.9	24	25	24.4	22.0	38.90	19.0	49.00
PMWC-M16-08	16	1/2	12.7	24	25	24.4	22.0	38.90	19.0	49.00
PMWC-M18-08	18	1/2	13.5	27	30	24.4	22.0	39.95	19.0	50.05

All dimensions are in millimeters unless otherwise specified. Dimensions are for reference only, subject to change.