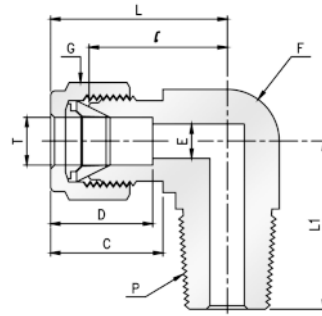


Male Elbow

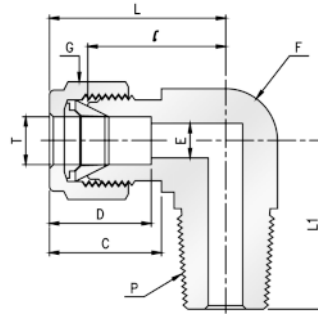


Imperial Range:

Part No.	Tube O. D. T in	P * (NPT)	E Min	Width across flat		D	C	ℓ	L	L ₁
				F in	G in					
PME-02-02	1/8	1/8	2.28	1/2	7/16	12.70	15.24	18.31	24.91	18.90
PME-02-04	1/8	1/4	2.28	1/2	7/16	12.70	15.24	18.31	24.91	23.36
PME-03-02	3/16	1/8	3.04	1/2	1/2	13.71	16.00	18.79	25.40	18.79
PME-03-04	3/16	1/4	3.04	1/2	1/2	13.71	16.00	18.79	25.40	23.36
PME-04-02	1/4	1/8	4.82	1/2	9/16	15.24	17.78	19.11	26.47	19.10
PME-04-04	1/4	1/4	4.82	1/2	9/16	15.24	17.78	19.82	27.18	23.87
PME-04-06	1/4	3/8	4.82	11/16	9/16	15.24	17.78	22.35	29.71	28.40
PME-04-08	1/4	1/2	4.82	13/16	9/16	15.24	17.78	24.61	31.97	35.10
PME-05-02	5/16	1/8	4.82	9/16	5/8	16.25	18.54	21.34	28.70	19.81
PME-05-04	5/16	1/4	6.35	9/16	5/8	16.25	18.54	22.41	29.77	24.50
PME-05-06	5/16	3/8	6.35	11/16	5/8	16.25	18.54	23.12	30.48	28.40
PME-06-02	3/8	1/8	4.82	5/8	11/16	16.76	19.30	23.12	30.48	20.60
PME-06-04	3/8	1/4	7.11	5/8	11/16	16.76	19.30	23.12	30.48	25.40
PME-06-06	3/8	3/8	7.11	11/16	11/16	16.76	19.30	23.88	31.24	28.44
PME-06-08	3/8	1/2	7.11	13/16	11/16	16.76	19.30	24.06	31.42	33.02
PME-06-12	3/8	3/4	7.11	1-1/16	11/16	16.76	19.30	29.72	37.08	36.83
PME-08-04	1/2	1/4	7.11	13/16	7/8	22.86	21.84	25.90	36.06	28.30
PME-08-06	1/2	3/8	9.65	13/16	7/8	22.86	21.84	25.90	36.06	28.30
PME-08-08	1/2	1/2	10.41	13/16	7/8	22.86	21.84	25.90	36.06	33.02
PME-08-12	1/2	3/4	10.41	1-1/16	7/8	22.86	21.84	29.71	39.87	36.83
PME-10-06	5/8	3/8	9.65	15/16	1	24.38	21.84	26.90	37.06	29.40
PME-10-08	5/8	1/2	11.93	15/16	1	24.38	21.84	26.90	37.06	34.00
PME-10-12	5/8	3/4	12.70	1-1/16	1	24.38	21.84	29.71	39.87	36.83
PME-12-08	3/4	1/2	11.93	1-1/16	1-1/8	24.38	21.84	29.71	39.87	37.00
PME-12-12	3/4	3/4	15.74	1-1/16	1-1/8	24.38	21.84	29.71	39.87	36.83
PME-14-12	7/8	3/4	15.74	1-1/4	1-1/4	25.90	21.84	34.54	44.70	41.65
PME-16-12	1	3/4	15.74	1- 27/64	1-1/2	31.24	26.41	36.83	49.02	42.20
PME-16-16	1	1	22.35	1- 27/64	1-1/2	31.24	26.41	36.83	49.02	46.70

All dimensions are in millimeters unless otherwise specified. Dimensions are for reference only, subject to change.

Male Elbow

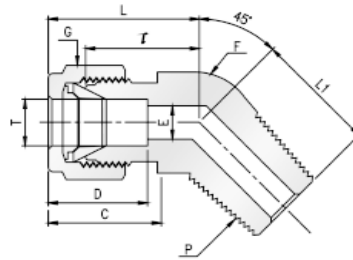
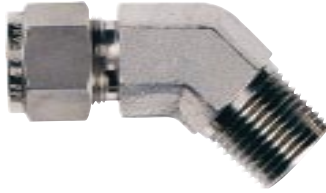


Metric Range: ISO Tapered Thread

Part No.	Tube O. D. T mm	P * R(PT)	E Min	Width across flat		D	C	l	L	L ₁
				F	G					
				mm	mm					
PME-M03-02	3	1/8	2.4	12.7	12	12.9	15.3	17.0	23.6	17.8
PME-M03-04	3	1/4	2.4	12.7	12	12.9	15.3	18.0	24.6	23.4
PME-M04-02	4	1/8	2.4	12.7	12	13.7	16.1	18.8	25.4	18.8
PME-M04-04	4	1/4	2.4	12.7	12	13.7	16.1	18.8	25.4	23.4
PME-M06-02	6	1/8	4.8	12.7	14	15.3	17.7	19.6	27.0	18.8
PME-M06-04	6	1/4	4.8	12.7	14	15.3	17.7	19.6	27.0	23.4
PME-M06-06	6	3/8	4.8	17.5	14	15.3	17.7	22.4	29.8	26.2
PME-M06-08	6	1/2	4.8	20.6	14	15.3	17.7	24.4	31.8	33.0
PME-M08-02	8	1/8	4.8	14.3	16	16.2	18.6	21.3	28.8	19.8
PME-M08-04	8	1/4	6.4	14.3	16	16.2	18.6	21.3	28.8	24.4
PME-M08-06	8	3/8	6.4	17.5	16	16.2	18.6	23.1	30.6	28.5
PME-M08-08	8	1/2	6.4	20.6	16	16.2	18.6	25.1	32.6	33.0
PME-M10-02	10	1/8	4.8	17.5	19	17.2	19.5	23.9	31.5	23.6
PME-M10-04	10	1/4	7.1	17.5	19	17.2	19.5	23.9	31.5	28.2
PME-M10-06	10	3/8	7.9	17.5	19	17.2	19.5	23.9	31.5	28.2
PME-M10-08	10	1/2	7.9	20.6	19	17.2	19.5	25.9	33.5	33.0
PME-M12-02	12	1/8	4.8	20.6	22	22.8	22.0	25.9	36.0	23.6
PME-M12-04	12	1/4	7.1	20.6	22	22.8	22.0	25.9	36.0	28.2
PME-M12-06	12	3/8	9.5	20.6	22	22.8	22.0	25.9	36.0	28.2
PME-M12-08	12	1/2	9.5	20.6	22	22.8	22.0	29.7	36.0	33.0
PME-M12-12	12	3/4	9.5	27.0	22	22.8	22.0	27.9	39.8	36.8
PME-M16-06	16	3/8	9.5	25.4	25	24.4	22.0	27.9	38.0	30.2
PME-M16-08	16	1/2	11.9	25.4	25	24.4	22.0	29.7	38.0	35.1
PME-M16-12	16	3/4	12.7	27.0	25	24.4	22.0	29.7	39.8	36.8
PME-M18-08	18	1/2	11.9	27.0	30	24.4	22.0	29.7	39.8	36.8
PME-M18-12	18	3/4	15.1	27.0	30	24.4	22.0	34.5	39.8	36.8
PME-M20-08	20	1/2	11.9	31.8	32	26.0	22.0	34.5	44.6	41.7
PME-M20-12	20	3/4	15.9	31.8	32	26.0	22.0	34.5	44.6	41.7
PME-M22-12	22	3/4	15.9	31.8	32	26.0	22.0	34.5	44.6	41.7
PME-M22-16	22	1	18.3	36.0	32	26.0	22.0	34.5	44.6	46.5
PME-M25-12	25	3/4	15.9	36.0	38	31.3	26.5	36.8	49.1	41.7
PME-M25-16	25	1	21.8	36.0	38	31.3	26.5	36.8	49.1	46.5

All dimensions are in millimeters unless otherwise specified. Dimensions are for reference only, subject to change.

Male Elbow 45°



Imperial Range:

Part No.	Tube O. D. T in	p * (NPT)	E Min	Width across flat		D	C	ℓ	L	L ₁
				F in	G in					
PLME-04-02	1/4	1/8	4.82	1/2	9/16	15.24	17.78	17.27	24.63	16.51
PLME-04-04	1/4	1/4	4.82	1/2	9/16	15.24	17.78	17.27	24.63	21.08
PLME-06-02	3/8	1/8	4.82	5/8	11/16	16.76	19.30	20.57	27.94	18.28
PLME-06-04	3/8	1/4	7.11	5/8	11/16	16.76	19.30	20.57	27.94	22.86
PLME-06-06	3/8	3/8	7.11	13/16	11/16	16.76	19.30	21.84	29.21	24.13
PLME-08-06	1/2	3/8	9.65	13/16	7/8	22.86	21.84	21.84	32.00	24.13

All dimensions are in millimeters unless otherwise specified. Dimensions are for reference only, subject to change.