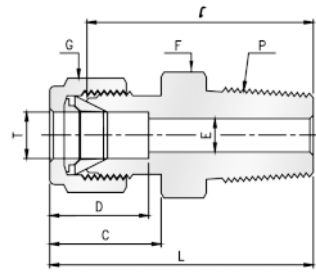
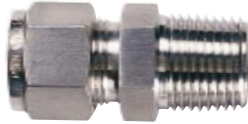


## Male Connector

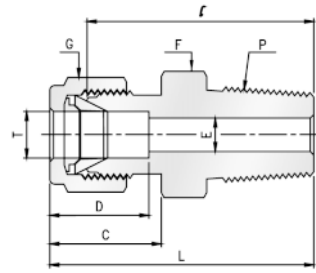
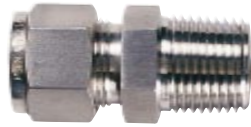


### Imperial Range:

Part No.	Tube O. D. T in	P * ( NPT )	E Min	Width across flat		D	C	ℓ	L
				F in	G in				
PMC-01-01	1/16	1/16	1.27	5/16	5/16	8.63	10.92	20.02	23.83
PMC-01-02	1/16	1/8	1.27	7/16	7/16	8.63	10.92	22.52	26.33
PMC-02-02	1/8	1/8	2.28	7/16	7/16	12.70	15.24	23.88	30.48
PMC-02-04	1/8	1/4	2.28	9/16	7/16	12.70	15.24	28.96	35.56
PMC-02-06	1/8	3/8	2.28	11/16	7/16	12.70	15.24	29.21	35.81
PMC-02-08	1/8	1/2	2.28	7/8	7/16	12.70	15.24	35.56	42.16
PMC-03-02	3/16	1/8	3.04	7/16	1/2	13.71	16.00	24.63	31.24
PMC-03-04	3/16	1/4	3.04	9/16	1/2	13.71	16.00	29.71	36.32
PMC-04-02	1/4	1/8	4.82	1/2	9/16	15.24	17.78	25.40	32.76
PMC-04-04	1/4	1/4	4.82	9/16	9/16	15.24	17.78	30.48	37.84
PMC-04-06	1/4	3/8	4.82	11/16	9/16	15.24	17.78	30.99	38.35
PMC-04-08	1/4	1/2	4.82	7/8	9/16	15.24	17.78	37.34	44.70
PMC-04-12	1/4	3/4	4.82	1-1/16	9/16	15.24	17.78	38.86	46.22
PMC-05-02	5/16	1/8	4.82	9/16	5/8	16.25	18.54	26.67	34.03
PMC-05-04	5/16	1/4	6.35	9/16	5/8	16.25	18.54	31.24	38.60
PMC-05-06	5/16	3/8	6.35	11/16	5/8	16.25	18.54	31.75	39.11
PMC-06-02	3/8	1/8	4.82	5/8	11/16	16.76	19.30	27.94	35.30
PMC-06-04	3/8	1/4	7.11	5/8	11/16	16.76	19.30	32.51	39.87
PMC-06-06	3/8	3/8	7.11	11/16	11/16	16.76	19.30	32.51	39.87
PMC-06-08	3/8	1/2	7.11	7/8	11/16	16.76	19.30	38.86	46.22
PMC-06-12	3/8	3/4	7.11	1-1/16	11/16	16.76	19.30	40.39	47.75
PMC-08-02	1/2	1/8	4.82	13/16	7/8	22.86	21.84	28.70	38.86
PMC-08-04	1/2	1/4	7.11	13/16	7/8	22.86	21.84	33.27	43.43
PMC-08-06	1/2	3/8	9.65	13/16	7/8	22.86	21.84	33.27	43.43
PMC-08-08	1/2	1/2	10.41	7/8	7/8	22.86	21.84	38.86	49.02
PMC-08-12	1/2	3/4	10.41	1-1/16	7/8	22.86	21.84	40.38	50.54
PMC-08-16	1/2	1	10.41	1-3/8	7/8	22.86	21.84	46.99	57.15
PMC-10-06	5/8	3/8	9.65	15/16	1	24.38	21.84	34.03	44.19
PMC-10-08	5/8	1/2	11.93	15/16	1	24.38	21.84	38.86	49.02
PMC-10-12	5/8	3/4	12.70	1-1/16	1	24.38	21.84	40.38	50.54
PMC-12-08	3/4	1/2	11.93	1-1/16	1-1/8	24.38	21.84	40.38	50.54
PMC-12-12	3/4	3/4	15.74	1-1/16	1/1-8	24.38	21.84	40.38	50.54
PMC-12-16	3/4	1	15.74	1- 3/8	1-1/8	24.38	21.84	46.99	57.15
PMC-14-12	7/8	3/4	15.74	1- 3/16	1-1/4	25.90	21.84	40.38	50.54
PMC-14-16	7/8	1	18.28	1-3/8	1-1/4	25.90	21.84	46.99	57.15
PMC-16-08	1	1/2	11.93	1-3/8	1-1/2	31.24	26.41	45.21	57.40
PMC-16-12	1	3/4	15.74	1-3/8	1-1/2	31.24	26.41	45.21	57.40
PMC-16-16	1	1	22.35	1-3/8	1-1/2	31.24	26.41	50.04	62.23

All dimensions are in millimeters unless otherwise specified. Dimensions are for reference only, subject to change.

## Male Connector



### Metric Range:ISO Tapered Thread

Part No.	Tube O. D. T mm	P * R(PT)	E Min	Width across flat		D	C	ℓ	L
				F	G				
				mm	mm				
PMC-M02-02	2	1/8	1.7	12	12	12.9	15.3	23.9	30.5
PMC-M03-02	3	1/8	2.4	12	12	12.9	15.3	23.1	29.7
PMC-M03-04	3	1/4	2.4	14	12	12.9	15.3	29.0	35.6
PMC-M04-02	4	1/8	2.4	12	12	13.7	16.1	24.6	31.2
PMC-M04-04	4	1/4	2.4	14	12	13.7	16.1	29.7	36.3
PMC-M06-02	6	1/8	4.8	14	14	15.3	17.7	25.4	32.8
PMC-M06-04	6	1/4	4.8	14	14	15.3	17.7	30.2	37.6
PMC-M06-06	6	3/8	4.8	17	14	15.3	17.7	31.0	38.4
PMC-M06-08	6	1/2	4.8	22	14	15.3	17.7	36.6	44.0
PMC-M08-02	8	1/8	4.8	15	16	16.2	18.6	26.7	34.2
PMC-M08-04	8	1/4	6.4	15	16	16.2	18.6	31.2	38.7
PMC-M08-06	8	3/8	6.4	17	16	16.2	18.6	31.7	39.2
PMC-M08-08	8	1/2	6.4	22	16	16.2	18.6	37.3	44.8
PMC-M10-02	10	1/8	4.8	18	19	17.2	19.5	28.7	36.3
PMC-M10-04	10	1/4	7.1	18	19	17.2	19.5	33.3	40.9
PMC-M10-06	10	3/8	7.9	18	19	17.2	19.5	33.3	40.9
PMC-M10-08	10	1/2	7.9	22	19	17.2	19.5	38.1	45.7
PMC-M12-04	12	1/4	7.1	22	22	22.8	22.0	33.3	43.4
PMC-M12-06	12	3/8	9.5	22	22	22.8	22.0	33.3	43.4
PMC-M12-08	12	1/2	9.5	22	22	22.8	22.0	38.1	48.2
PMC-M12-12	12	3/4	9.5	27	22	22.8	22.0	38.9	49.0
PMC-M15-08	15	1/2	11.9	24	25	24.4	22.0	38.9	49.0
PMC-M16-04	16	1/4	7.1	24	25	24.4	22.0	34.0	44.1
PMC-M16-06	16	3/8	9.5	24	25	24.4	22.0	34.0	44.1
PMC-M16-08	16	1/2	11.9	24	25	24.4	22.0	38.9	49.0
PMC-M16-12	16	3/4	12.7	27	25	24.4	22.0	38.9	49.0
PMC-M18-08	18	1/2	11.9	27	30	24.4	22.0	40.4	50.5
PMC-M18-12	18	3/4	15.1	27	30	24.4	22.0	40.4	50.5
PMC-M20-08	20	1/2	11.9	30	32	26.0	22.0	42.2	52.3
PMC-M20-12	20	3/4	15.9	30	32	26.0	22.0	42.2	52.3
PMC-M22-12	22	3/4	15.9	30	32	26.0	22.0	42.2	52.3
PMC-M22-16	22	1	18.3	35	32	26.0	22.0	47.8	57.9
PMC-M25-12	25	3/4	15.9	35	38	31.3	26.5	45.2	57.5
PMC-M25-16	25	1	21.8	35	38	31.3	26.5	50.0	62.3

All dimensions are in millimeters unless otherwise specified. Dimensions are for reference only, subject to change.