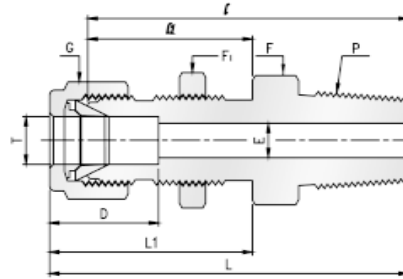


Bulkhead Male Connector



Imperial Range:

Part No.	Tube O. D. T in	P * (NPT)	E Min	Width across flat			D	l	l ₁	L	L ₁	Panel Hole Drill Size	Panel Max. Thickness
				F in	F ₁ in	G in							
PBMC-02-02	1/8	1/8	2.28	1/2	1/2	7/16	12.70	39.88	24.63	46.48	31.24	8.33	12.70
PBMC-04-02	1/4	1/8	4.82	5/8	5/8	9/16	15.24	42.17	26.16	49.53	33.52	11.50	10.16
PBMC-04-04	1/4	1/4	4.82	5/8	5/8	9/16	15.24	45.98	26.16	53.34	33.52	11.50	10.16
PBMC-06-04	3/8	1/4	7.11	3/4	3/4	11/16	16.76	50.04	29.46	57.40	36.83	14.68	11.17
PBMC-08-06	1/2	3/8	9.39	15/16	15/16	7/8	22.86	53.08	31.75	63.24	41.91	19.44	12.70
PBMC-08-08	1/2	1/2	10.41	15/16	15/16	7/8	22.86	58.67	31.75	68.83	41.91	19.44	12.70

Metric Range:

Part No.	Tube O. D. T mm	P * (NPT)	E Min	Width across flat			D	l	l ₁	L	L ₁	Panel Hole Drill Size	Panel Max. Thickness
				F mm	F ₁ mm	G mm							
PBMC-M06-02	6	1/8	2.28	14	17	14	17	41.90	26.0	51.0	35	11.60	12
PBMC-M06-04	6	1/4	4.82	14	17	14	17	46.90	26.0	56.0	35	11.60	12
PBMC-M10-04	10	1/4	7.11	17	19	19	18	52.10	29.5	60.5	38	16.40	10
PBMC-M12-04	12	1/4	10.40	22	24	22	24	59.70	32.0	71.0	43	19.50	14

All dimensions are in millimeters unless otherwise specified. Dimensions are for reference only, subject to change.